

DNLF6 - Explosion Proof Hermetically Sealed Prox Switch

ROTEX Cobra Switch



EC94/9
ATEX

FEATURES

- Explosion proof to I, IIA, IIB, and IIC
- Enclosure certified to UL 1203 & UL508, File No. 246615
- Switch Box conforms to Ex D IIC, T6 highest level of safety
- ATEX certified by CESI, Italy, Cert No. CESI 05 ATEX017
- Aluminum die cast enclosure, powder coated for superior corrosion resistance
- Weather proof enclosure to IP67
- Polycarbonate Dome, Shatterproof
- Red and Yellow Indicator
- Color coded cams easy to identify, easy to set
- Special circuit board eliminates internal wiring
- Circuit board laminated for complete corrosion protection
- Solenoid termination inside the switch box is standard
- Serrated cams locked together ensures adjusted settings secured against any vibration
- Two conduit entries provided as standard
- Conduit entry options ½" NPT, ¾" NPT, M20 X 1.5
- Temperature 4°F to 146°F
- Bracket available as option



ORDERING OPTIONS

Series	Switch	Qty Switches	Conduit Entry		Color		Bracket	Certificate	
DNLF		1	4R	½" NPT	B	Black		U	CU _L , UL _L
		2	6R	¾" NPT	Y	Yellow		C	CE
			3M	M20X1.5				A	ATEX
CODE	MAKE	MODEL	RATING						
6A	Hermetic Switch Inc.	COBRA	2Amps, 220V AC/DC, 50Hz/60Hz, NO/NC						
16A	Hermetic Switch Inc.	COBRA GOLD	0 – 48 VDC, up to 100mA 0 – 220 VAC, 20 mA						

Refer to Bracket Selection Page

ORDERING EXAMPLE

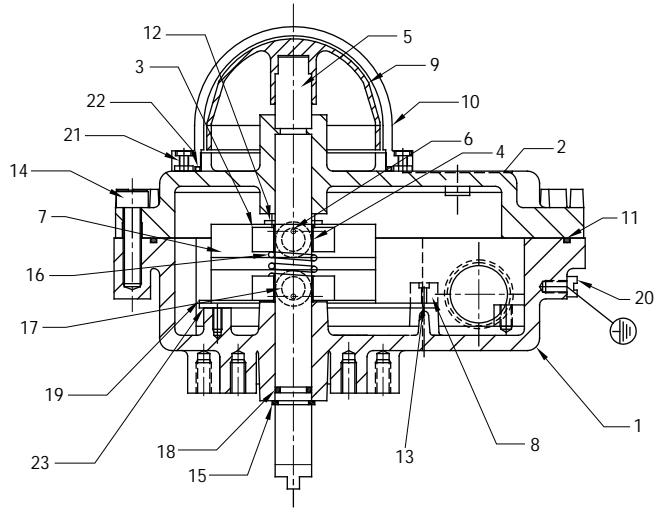
- DNLF-6A2-6R-B-BKS1-A
- Explosion proof box with (2) hermetically sealed switches, ¾" conduit entries, black enclosure, with stainless steel bracket suitable for 80X30 tapping and for 20mm pinion height. With ATEX certificate

DNLF6 - Explosion Proof Hermetically Sealed Prox Switch ROTEX Cobra Switch

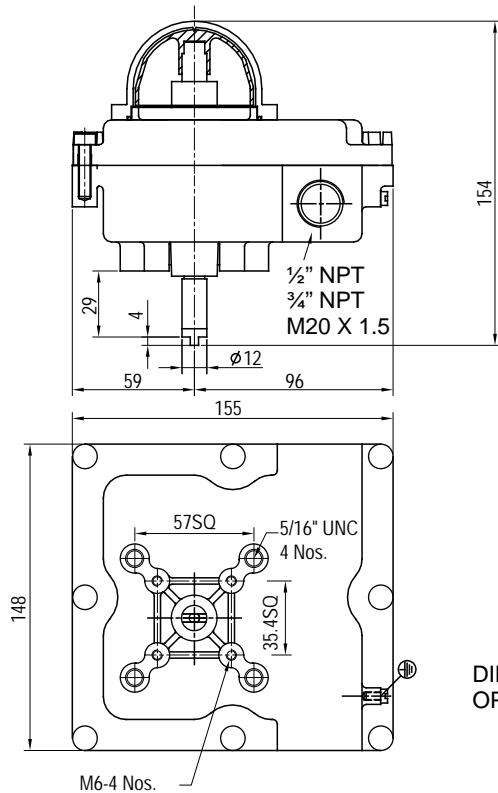
MATERIAL OF CONSTRUCTION

23	CIRCUIT BOARD	1	----
22	'O' RING	1	NBR
21	PHILIPS HEAD SCREW	4	STAINLESS STEEL
20	SCREW FOR EARTHING	2	STAINLESS STEEL
19	MOUNTING PLATE	1	M.S.
18	'O' RING	2	NBR
17	CAM INSERT	2	POLYAMIDE
16	SPRING	1	STAINLESS STEEL
15	'E' TYPE CIRCLIP	1	SPRING STEEL
14	NON FALLING SCREW	8	STAINLESS STEEL
13	SCREW FOR CONN. STRIP	2	STAINLESS STEEL
12	SCREW FOR REEDSWITCH	2	STAINLESS STEEL
11	GASKET	1	NBR
10	INDICATOR COVER	1	POLYCARBONATE
9	INDICATOR	1	ABS PLASTIC
8	CONNECTOR STRIP-6 WAY	1	POLYAMIDE
7	REED SWITCH ASSEMBLY	2	-
6	SPRING DOWEL	2	SPRING STEEL
5	SHAFT	1	STAINLESS STEEL
4	CAM-LOCK	2	POM
3	CAM	2	POLYAMIDE
2	COVER	1	ALUMINUM ALLOY LM-6
1	HOUSING	1	ALUMINUM ALLOY LM-6
S.NO.	DESCRIPTION	QTY.	MATERIAL

CROSS SECTION



DIMENSION DETAILS



DIMENSION 'X'
 OPTIONS: 1/2" NPT
 3/4" NPT
 M20 X 1.5

WIRING DIAGRAM

